

Thank you for purchasing your Unplugged Performance Rear Under Spoiler & Diffuser System for the Tesla Model S! Please read this manual carefully prior to installation.

REAR UNDER SPOILER & DIFFUSER SYSTEM

	PARTS	QUANTITY
Included Parts	Rear Under Spoiler	1 PIECE
	Hardware Set	1 SET

1. Rear bumper cover removal is necessary prior to installation of the diffuser system. First, remove the T25 Torx screws located at the edges of the rear bumper cover in the wheel wells (the screw is visible behind the wheel well liner).
2. On the underside of the OEM diffuser, there are several push-type plastic fasteners that attach the OEM diffuser fins and diffuser to the chassis. Using a flathead screwdriver or a plastic panel tool, remove these fasteners (there should be at least 8 pieces).
3. The plastic OEM rear diffuser has 2 flat panels, as well as 4 fins [strakes]. These panels are held on by 23 individual hex bolts. Using a 10mm wrench, remove and place aside these bolts.
4. Once the bolts are removed, the plastic fins [strakes] will now be loose. Remove them by sliding them in either direction towards the outside of the car (note the L-shape of the tabs).



5. Next, open the trunk lid. Inside, you will see 2 trunk room lamps, located on both the left and right inner trunk panels. Using a trim panel tool or a flat blade screwdriver with the tip wrapped, loosen these lamps, then unplug them to remove.



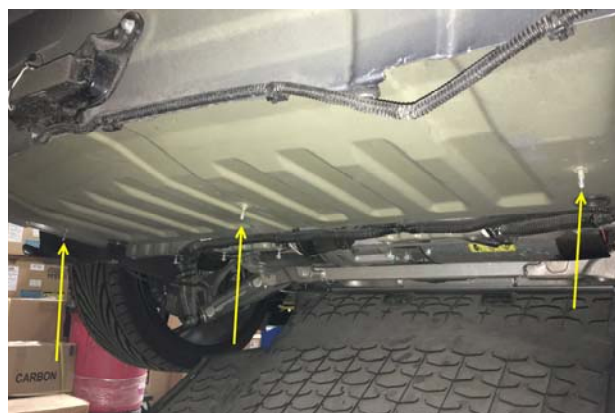
6. Behind the lamp, there will now be a metal stud visible. Using a 10mm hex head deep socket, remove the nut. (Repeat for each side of the vehicle, 2 in total.)

NOTE: Be careful not to drop the nut during removal!!



7. The rear bumper cover should now be completely loose. Before removal from the vehicle, be sure to carefully slide the plastic diffuser panel downward, releasing it from the 3 metal studs on the underside of the car.

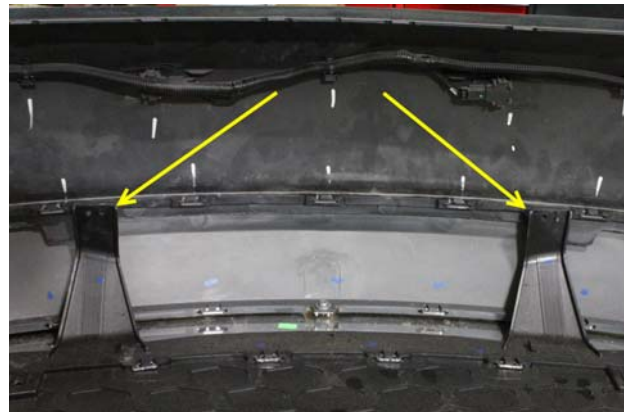
NOTE: If equipped with PDC, you will also need to unplug the bumper cover sub-harness while removing the bumper cover from the vehicle.



8. Once the bumper cover and rear under spoiler combination is removed from the vehicle, there will be 2 plastic push-type fasteners and 2 screws that are used to attach the rear under spoiler to the bumper cover. Using a panel tool or a flat blade screwdriver, remove the fasteners and set them aside. Next, using a Philips head screwdriver, remove the 2 screws on either end of the cover.



9. Next remove the two screws that attach the large plastic tabs in the center of the diffuser.



10. The rear under spoiler should now be loose. Carefully pull the rear under spoiler toward the visible end of the rear bumper cover, separating it from the bumper cover.

11. Next, carefully fit the Unplugged Performance [U.P.] Rear Under Spoiler to the rear bumper cover, slipping the tabs into the slots in the bumper cover (15 tabs & slots).



12. Once fitted, attach the provided speed nuts [U-Clips] to each of the tabs along the back edge of the diffuser (9 total) and use the included screws to pass through the OEM tabs and into the speed nuts.



13. In the two center holes (formerly occupied by the push-type clips), use the provided bolts and jam nuts to affix the diffuser to the rear bumper cover.



14. Finally, follow the previous steps in reverse order to complete the installation.

NOTE: During reinstallation of the bumper cover and diffuser, take caution to not place any undo strain or excessive pressure on the metal studs mounted to the underside of the chassis (these studs are not utilized for the Carbon Fiber version of the U.P. Rear Diffuser).



15. Remove the rear reflectors from the OEM rear under spoiler by pressing firmly on the backsides of each of the tabs. Install reflectors into U.P. Rear Under Spoiler using the OEM tabs.



16. Finally, once the bumper cover has been reinstalled and properly secured, make sure to reinstall the rubber trunk seal. To reattach, pull the seal over the upper middle edge of the bumper cover and push in to lock it into the bracket.

NOTE: The OEM plastic diffuser panel that resides directly under the rear drive unit is meant to have a slightly bowed shape.

*** Do not attempt to flatten the natural bow or modify any parts for fitment. ***

