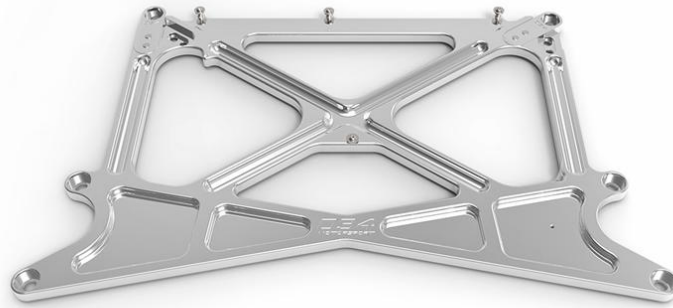




[034Motorsport X-Brace Billet Aluminum Chassis Reinforcement, B8 Audi A4/S4/RS4, A5/S5/RS5, Q5/SQ5](#)



The installation of your 034Motorsport X-Brace Billet Aluminum Chassis Reinforcement for the B8 Audi A4/S4/RS4, A5/S5/RS5, Q5/SQ5 is a relatively simple process that will take approximately one hour to complete. These instructions were made using a B8.5 (Facelift) vehicle, and variances between B8 (Pre-Facelift) and B8.5 (Facelift) vehicles are noted.

**Supplied Parts:**

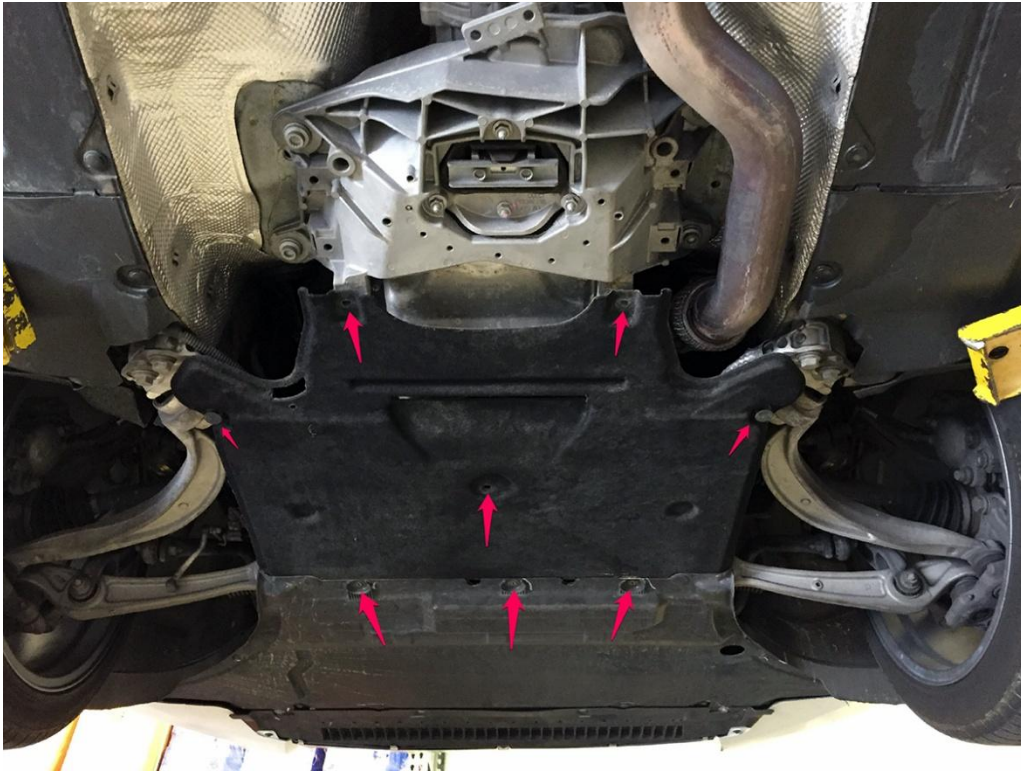
- 034Motorsport X-Brace Billet Aluminum Chassis Reinforcement
- Modular X-Brace Inserts (2) & M10 Screws (4)
- M5 Screws (4) & M5 Washers (4)

**Tools Needed:**

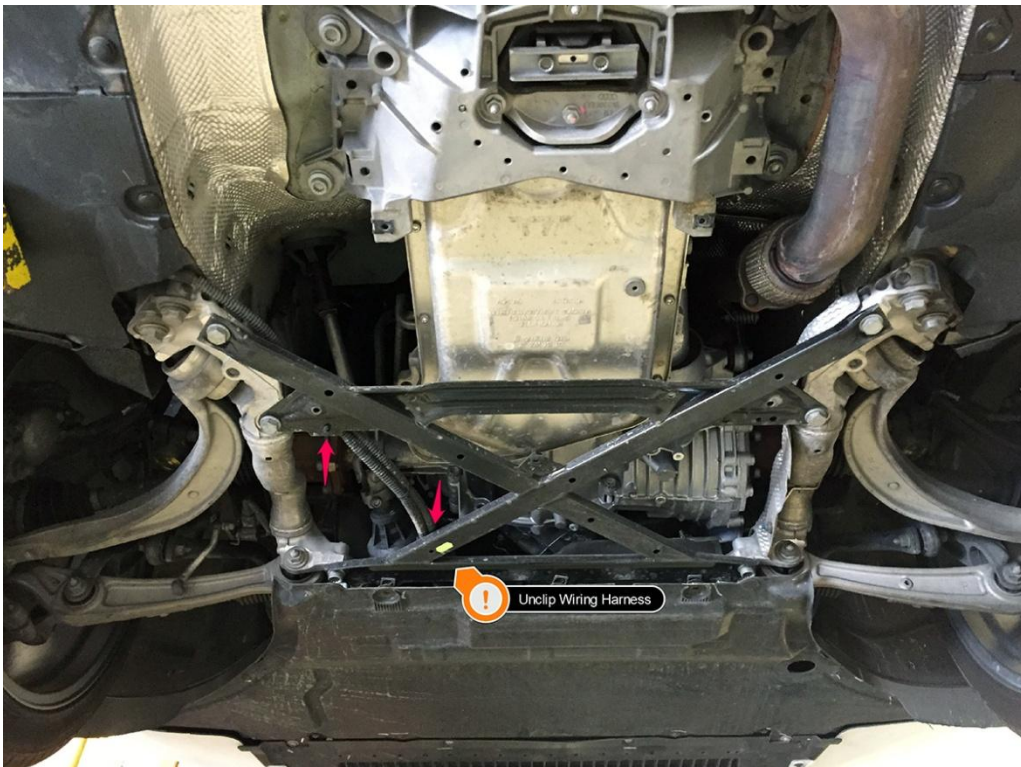
- Hands (Opposable Thumbs Are Optional)
- Torx T25 Driver
- 4mm & 6mm Allen Drivers
- Flathead Screwdriver
- 19mm End Wrench
- 10mm & 18mm Sockets
- 14mm Triple Square Socket
- Torque Wrench
- Ramps, Lift, or Jack & Jackstands

**Step 0** – Raise the vehicle securely on jackstands, or a lift, in order to gain access to the front subframe. Make sure you have all tools necessary for installation of the 034Motorsport X-Brace.

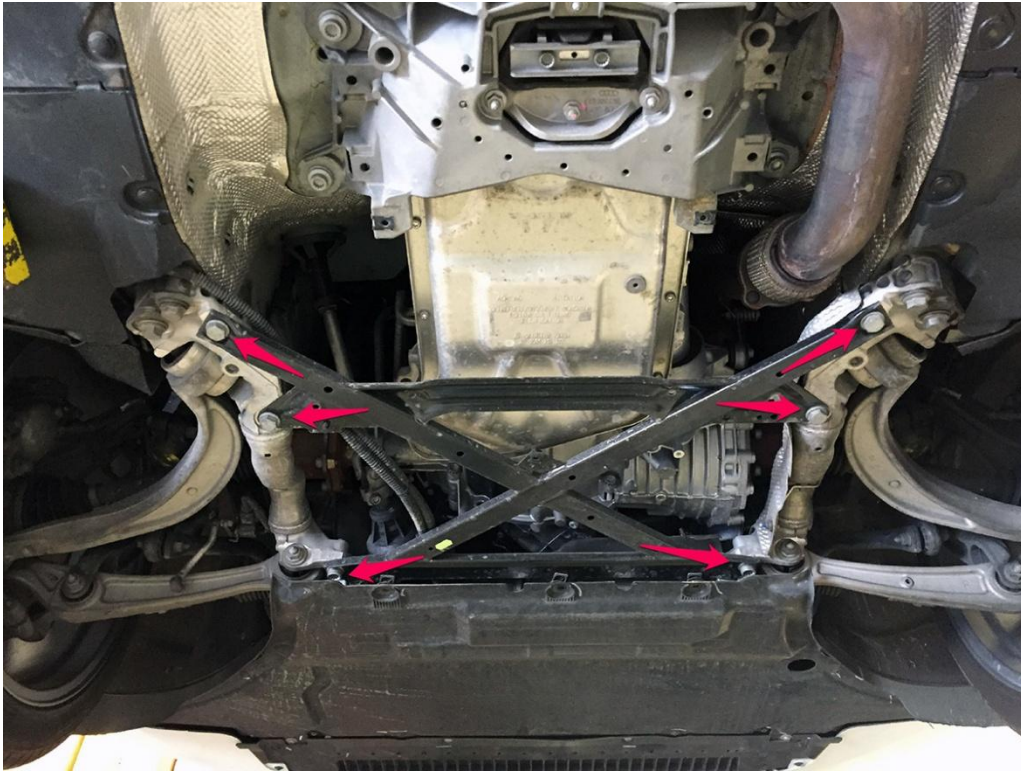
**Step 1** – Using your T25 driver and a flathead screwdriver, remove the six T25 Torx screws and two plastic rivets securing the undercarriage tray, shown with arrows below.



**Step 2 – (Facelift)** Remove the two plastic factory clips securing the power steering cooler lines to the stock subframe brace. **(Pre-Facelift)** Use a 10mm socket to remove the nut securing the power steering cooler to the subframe brace.



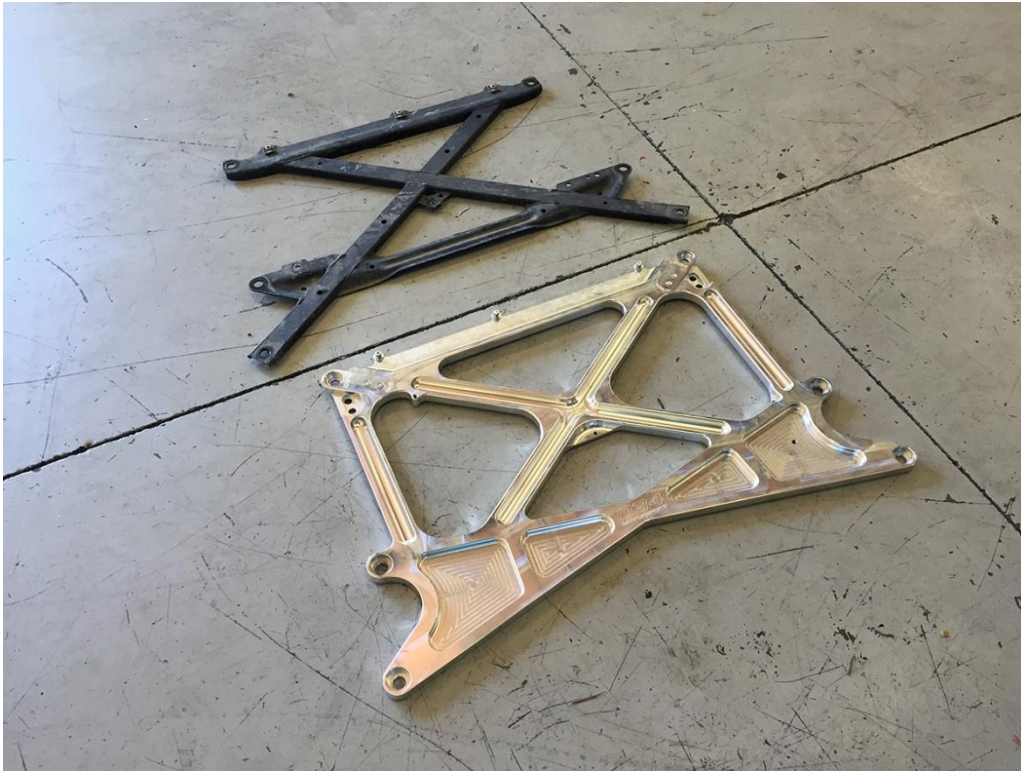
**Step 3** – Support the subframe brace with one hand to ensure that it doesn't fall on your head. Using the 18mm socket, 14mm triple square, and your superhuman strength, loosen the bolts that attach the stock subframe brace.



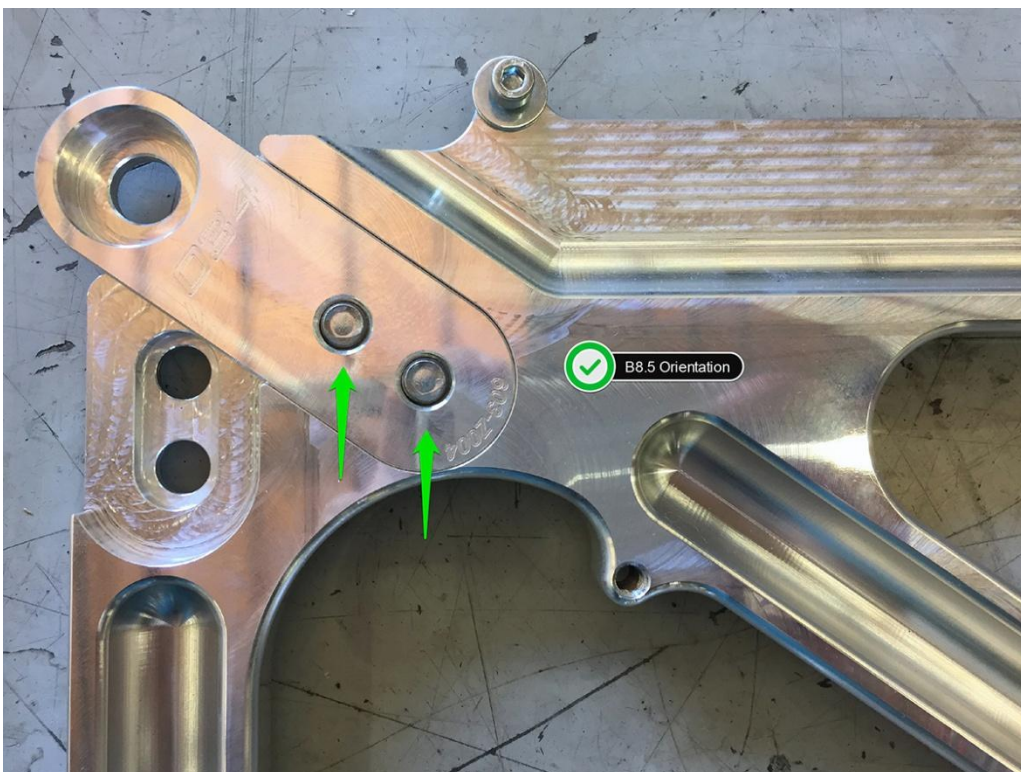
**Step 4** – Remove the factory subframe brace, and set aside. **(Pre-Facelift)** You must remove the threaded power steering cooler hose mounting bushing from the factory subframe brace using a 19mm box wrench, and transfer it over to the matching hole on the 034Motorsport X-Brace.



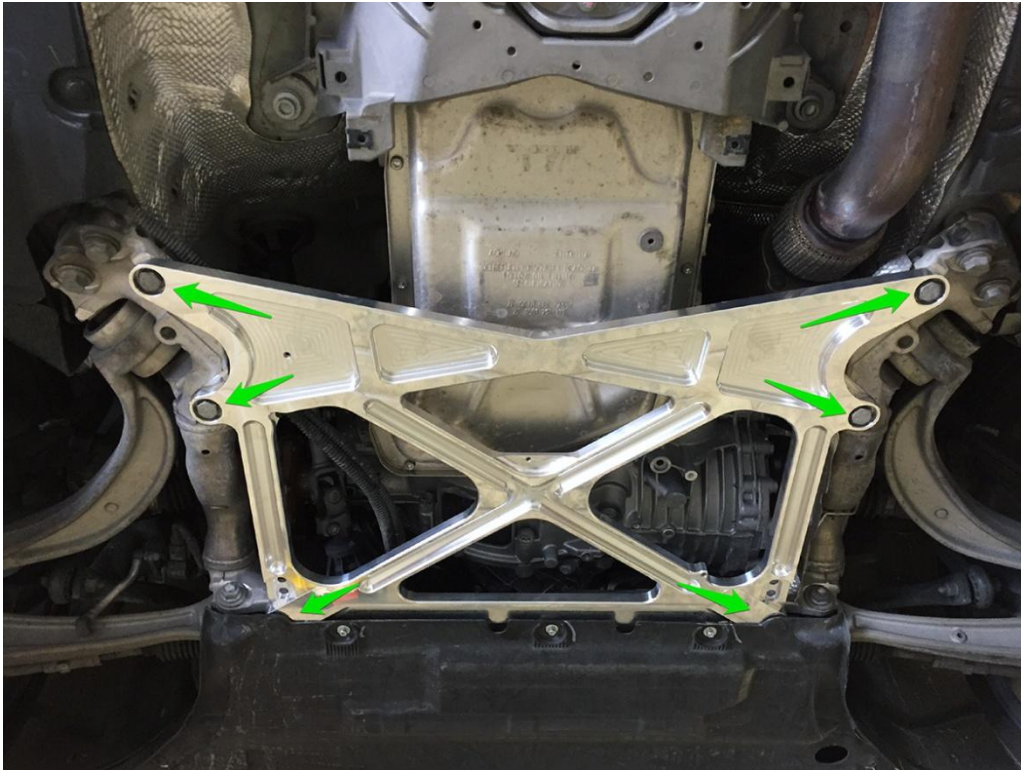
**Step 5** – Lay the stock subframe brace and the 034Motorsport X-Brace next to each other, and revel in the X-Brace’s beauty. **(Pre-Facelift)** Make sure you didn’t forget to swap over the power steering cooler hose mount in the last step!



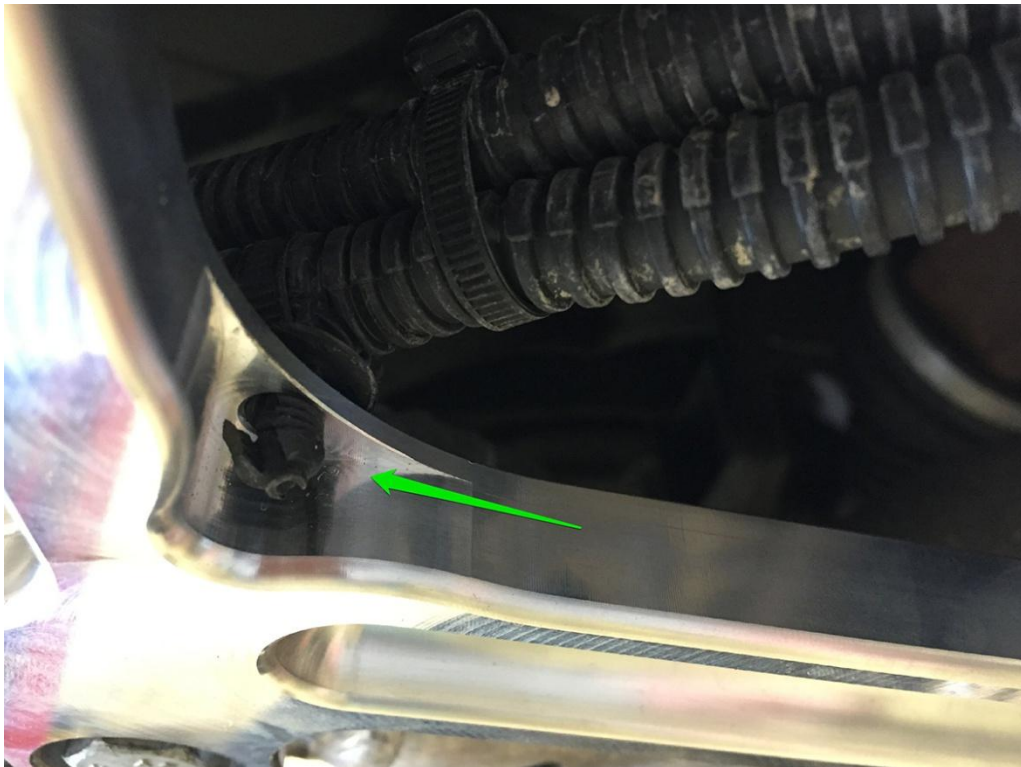
**Step 6** – In this step, install the Modular X-Brace Inserts in the proper orientation for your vehicle. Torque the provided M10 screws to 55 Nm using a 6mm allen driver. **(Facelift)** The inserts should install diagonally, as pictured below. **(Pre-Facelift)** The inserts should be installed straight up and down.



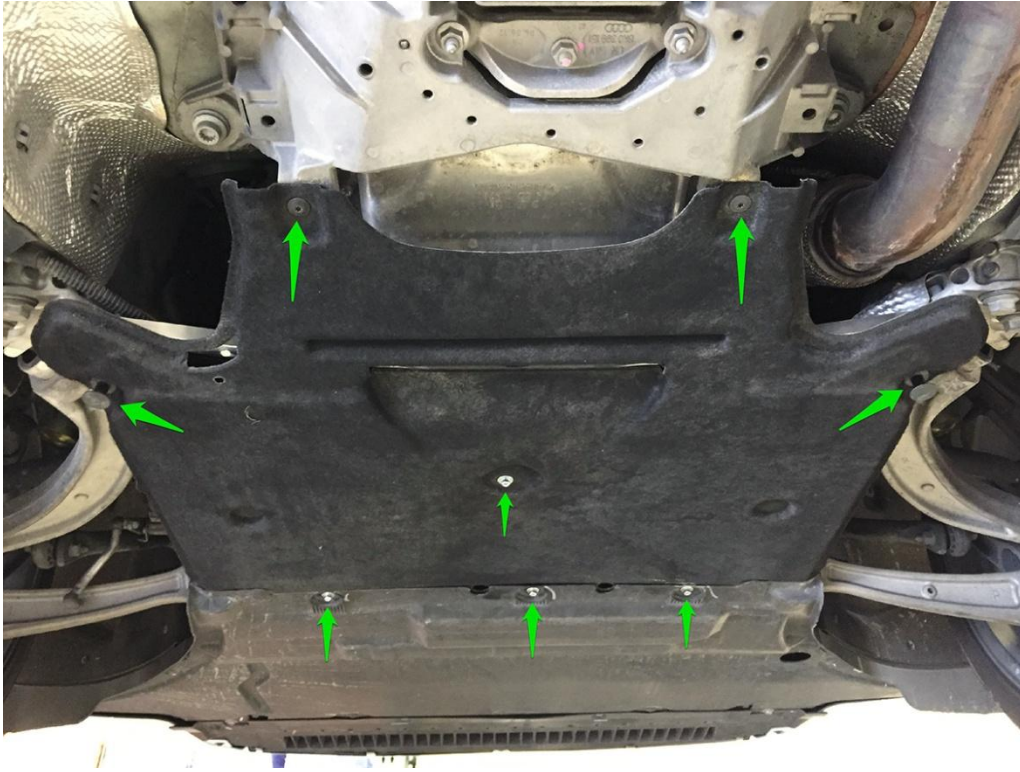
**Step 7** – Install the 034Motorsport X-Brace using new bolts. **(Facelift)** Torque the six M12 hex head bolts to 90 Nm + 135 Degrees. **(Pre-Facelift)** Torque the four M12 hex head bolts to 90 Nm + 135 Degrees. Torque the two M12 triple-square bolts to 90 Nm + 90 Degrees. Marvel at your work!



**Step 8** – Secure the power steering cooler hoses that you removed in [Step 2](#). Yes, we provided an anchor link back to [Step 2](#) so that you wouldn't get lost. We're nice people like that over here. **(Pre-Facelift)** Attach using M10 nut.



**Step 9** – Reinstall the undercarriage tray. Secure using two of the stock T25 Torx screws(rear), two plastic rivets, (sides) and four of the supplied M5 screws and washers (front, center, blue Loctite recommended), as pictured below.



**Step 10** – Put your tools away, lower your vehicle, and enjoy the upgrade! You should notice more precise steering with improved chassis feedback.