



HOSE ASSEMBLY INSTRUCTIONS

Assembly Instructions for 1000 series, 6000 series fittings & 200, 230, 205 and 235 series hose:

STEP 1: Mark desired length of hose by wrapping it in race or masking tape. Using a fine-tooth hack saw or cut-off wheel, cut through hose at the specified length. Once finished, remove tape and clean away any debris from inside of hose.

NOTE: An even perpendicular cut is important in ensuring proper installation; tape must be removed to create proper seal between hose and socket.

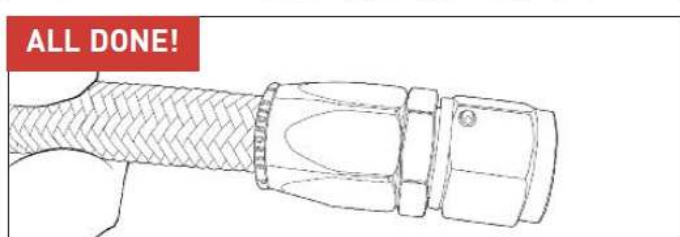
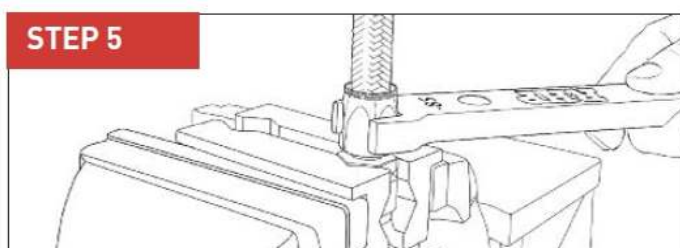
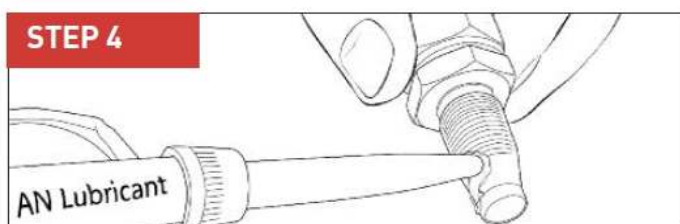
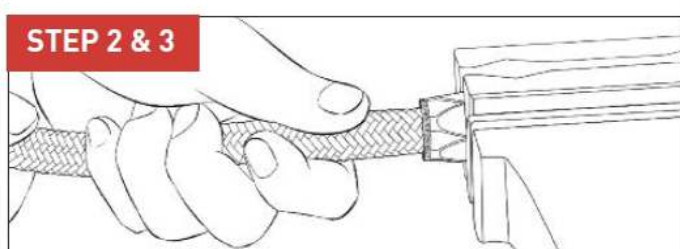
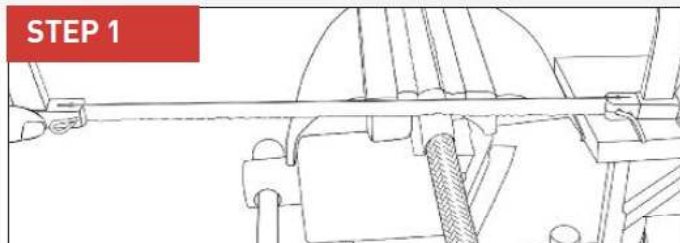
STEP 2: Hold or clamp socket in place with soft vise jaws and insert hose by turning hose clockwise. Turn hose clockwise until hose is snug against the back of socket threads.

STEP 3: Mark hose with tape or marker at rear of socket. This will later show you if the hose has pushed out of the socket during assembly, and if so, may leak when used.

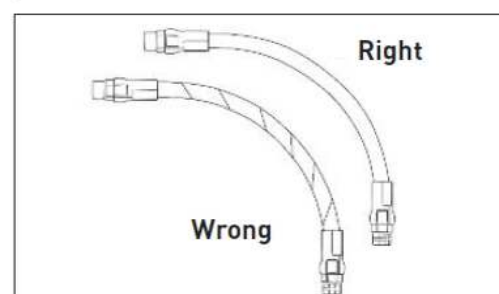
STEP 4: Liberally apply lubrication oil to nipple before placing nipple into soft vise jaws and turning socket onto nipple threads.

STEP 5: Start threading socket over the nipple by hand. Continue to tighten by hand as far as possible. Using a wrench continue turning socket onto nipple threads until the base of the socket is within .060-.080" of contact with the back of the nipple hex or until there is no more than a 1/16" gap between the base of the socket and nipple hex.

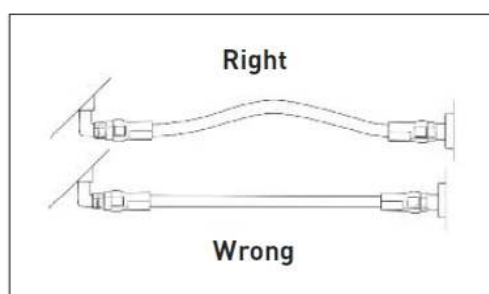
NOTE: After installation, wash and then test assembly for an interval of 30 to 60 seconds using twice the maximum operating pressure.



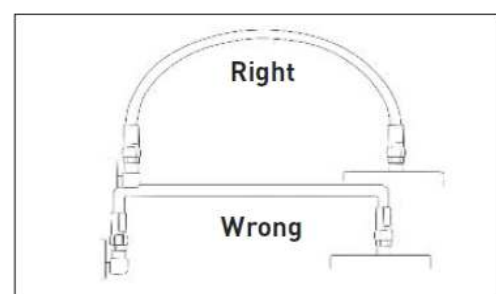
HOSE INSTALLATION TIPS



1. Avoid twisting hose when installing.



2. Allow some slack in assembly for changes in length that occur under pressure.



3. When routing hose line, provide a smooth bend radius. Avoid sharp bends which may cause hose to collapse and restrict flow.